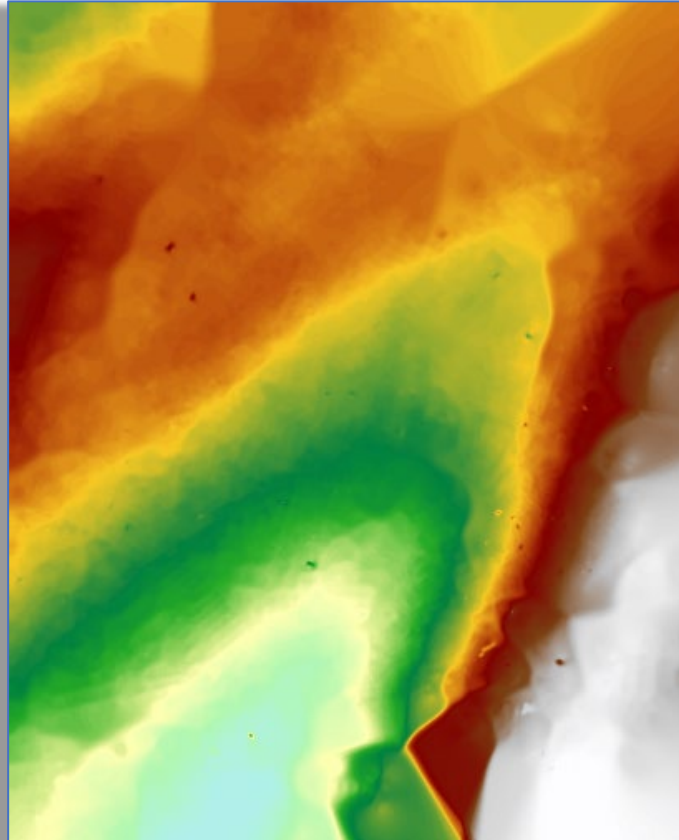


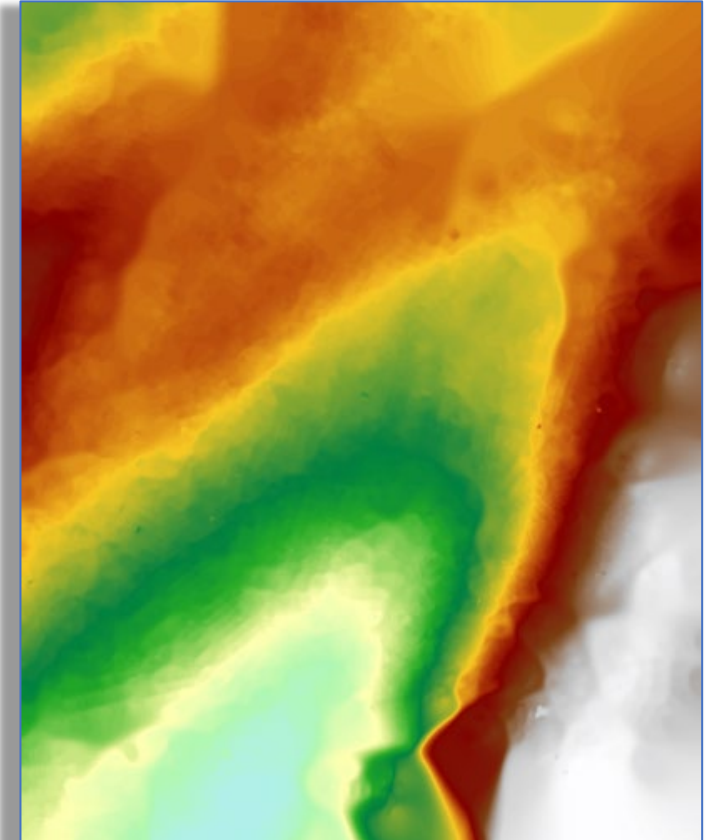
- Creating Coal Seam Elevation Rasters



Coal seam elevation points were digitized/vectorized from georeferenced mine maps to create a point layer. (This data can be supplemented with third party data from drill logs, geology structure contours, etc. to fill in gaps.)



Point data is interpolated to create a Coal Seam Elevation Raster. Interpolation methods and parameters will vary depending on data and location. (Any geologic faults should be digitized and used as barriers for interpolation.)



Extensive quality control is performed to remove any "peaks" and "wells" created from erroneous data values.