

# Keystone Commons



**I**n the 1800s, this 91-acre site in Allegheny County was home to Westinghouse Electric Corporation's manufacturing operations called the East Pittsburgh Works. During the height of operations, the site contained more than 4 million square feet of manufacturing space and five multi-level office and research buildings.

In the early 20<sup>th</sup> century, Keystone Commons was part of an area known as "The Workshop of the World" for the role it played in transforming the United States into an industrial super-power and aiding in the winning of two World Wars.

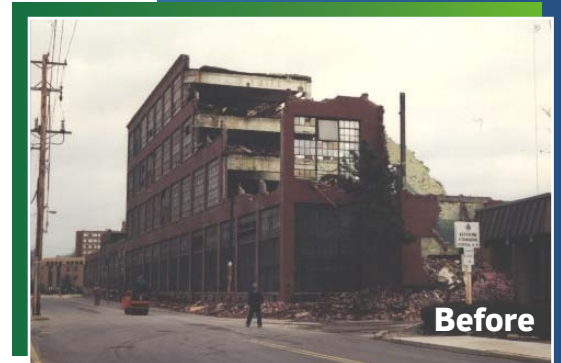
In later years, when Westinghouse operations slowed dramatically, the Regional Industrial Development Corporation of Southwestern Pennsylvania (RIDC) stepped in to begin discussions about long-range plans for the property. In 1989, RIDC acquired the property and today, Keystone Commons is once again helping to rebuild the economic base of Southwestern Pennsylvania by attracting new and varied industries to the site.

Following the sale and transfer of the property, RIDC developed a Master Plan for the site which designated several of the buildings to be demolished so the site could be accessed for multi-business occupancy, and the service utilities extended to the remaining building complexes.

There are eight separate building clusters under the Master Plan, and the development concept is for heavy manufacturing to be located at either end of the site, with trucking and railroad services. To the center are light manufacturing and service businesses that share common space in what is called the "Industrial Mall." At the central entry location are light manufacturing and office uses, and an indoor parking garage has been constructed within one of the former high bay buildings.

Keystone Commons is a compatible assemblage of many different businesses, functioning together around common circulation and access. It builds upon the early concepts that formed urban communities.

Today, nearly 50 companies employ more than 1,500 workers at the site. A diverse mix of companies ranging from steel and high tech manufacturing to a cookie company occupy this impressive multi-use urban industrial center that has been heralded as one of the most creative brownfield industrial park redevelopments in the United States.



pennsylvania



DEPARTMENT OF ENVIRONMENTAL PROTECTION

Office of Community Revitalization and Local Government Support