

# Pa Conservation Districts Role in Natural Gas Pipelines

Presentation to Pipeline Task Force 8/26/2105

## Environmental Education

We at the Susquehanna County Conservation District (SCCD) are convinced that there is a tremendous need for environmental education for our youth. Every year the District sponsors Enviorthon, an environmental knowledge contest for high schoolers. The



SCCD is fortunate to have a staff with extensive experience in agriculture, soil conservation, wildlife and aquatic ecology to present your students a wide array of environmental topics. If you would like a special presenter we will be happy to arrange one for you as we have many partner contacts.

## Our Main Concerns Are:

- Soil erosion on earth disturbance sites.
- Permits to work near streams and other waters.
- Water quality related to manure and other nutrients.
- Cost-effective agricultural practices.
- No-till farming of cover crops, pasture and corn.
- Environmental education for all ages.

## Who We Are

The Susquehanna County Conservation District is a political subdivision of the Commonwealth of Pennsylvania. The SCCD was established by an agreement between the Susquehanna County Commissioners and the State Conservation Commission in 1947.

## Our Mission

*"To conserve the natural resources of the county through an innovative and comprehensive conservation program based on total quality management, local leadership, a highly qualified staff and mutual cooperation with our regional, state and federal partners."*



## SUSQUEHANNA COUNTY CONSERVATION DISTRICT

88 Chenango St Montrose, PA 18801  
(570) 278-4600 ext. 3050  
FAX (570) 278-7165  
email: [soil@suscondistrict.org](mailto:soil@suscondistrict.org)

Susquehanna County  
**SCCD**  
Conservation District



The Susquehanna County Conservation District, (SCCD) provides information and technical assistance to assist people and communities in the wise use of their natural resources.

Through partnerships among non-profit groups and public agencies, the district promotes a cooperative approach to natural resource issues.

The SCCD is guided at the local level by a Board of Directors and at the state level by the State Conservation Commission. The SCCD is a member of the Pennsylvania Association of Conservation Districts, a nonprofit organization that supports, enhances, and promotes Pennsylvania's Conservation Districts and their programs.



## Erosion and Sediment Program

The District is delegated from DEP to conduct the Chapter 102 & Chapter 105 permitting programs. Two E&S technicians administer the programs and provide technical assistance for landowners in the county.

All earth disturbance activities over one acre in size are required to have a National Pollution Discharge Elimination System permit. Under the Chapter 102 program, the District reviews erosion and sediment control plans and issues NPDES permits.

The District provides technical assistance to County residents for PA regulations of wetlands, stream channels and ponds, as these sensitive areas fall under the Chapter 105 rules and regulations.

## Dirt and Gravel Roads Pollution Prevention

This program is intended to improve local water quality by reducing sediment loss from dirt and gravel roads.



Local municipalities may apply for funds for roads projects and are encouraged to adopt environmentally sensitive methods for managing dirt and gravel roads.

## Watershed Program

Water is one of Pennsylvania's most precious and basic resources. The District is committed to the protection and responsible use of this resource. Several watershed associations have been formed in the county with the help of the District. These grass root organizations assess their watersheds, create plans and educate the public on the health and needs of the local streams.



## Chesapeake Bay Program

The Chesapeake Bay agreement is a multi-state and federal partnership to clean up and restore the Chesapeake Bay. Agriculture is a key component of the WIP (Watershed Implementation Plan). The District educates landowners on their baseline requirements for erosion control and manure management. Limited cost share is available for key practices.

## Nutrient Management

Pennsylvania's ACT 38 requires nutrient management plans (NMP) for concentrated animal operations and encourages the development of nutrient management plans for all operations. DEP requires that all operations producing or using animal waste have a manure management plan. The District provides technical assistance in developing MMPs. The District also ensures that plans are compliant with current regulations.

## No-Till Program

The District's No-Till Program promotes the use of conservation measures reducing soil loss and improving soil health on agricultural lands



by minimal disturbance of crop fields and the use of cover crops. Residue from the previous year's crop or a cover crop is established and left in place for the winter season. The district has available for rent three no-till corn planters and two no-till seeders. Our No-Till Program Specialist delivers the equipment and assists in setting up the planter.

## Agricultural Land Preservation

The SCCD administers Susquehanna County's Agricultural Land Preservation program. The goal of this program is to preserve agricultural land in perpetuity. To date, the county's program has saved nearly 30 farms and over 5500 acres from potential development.

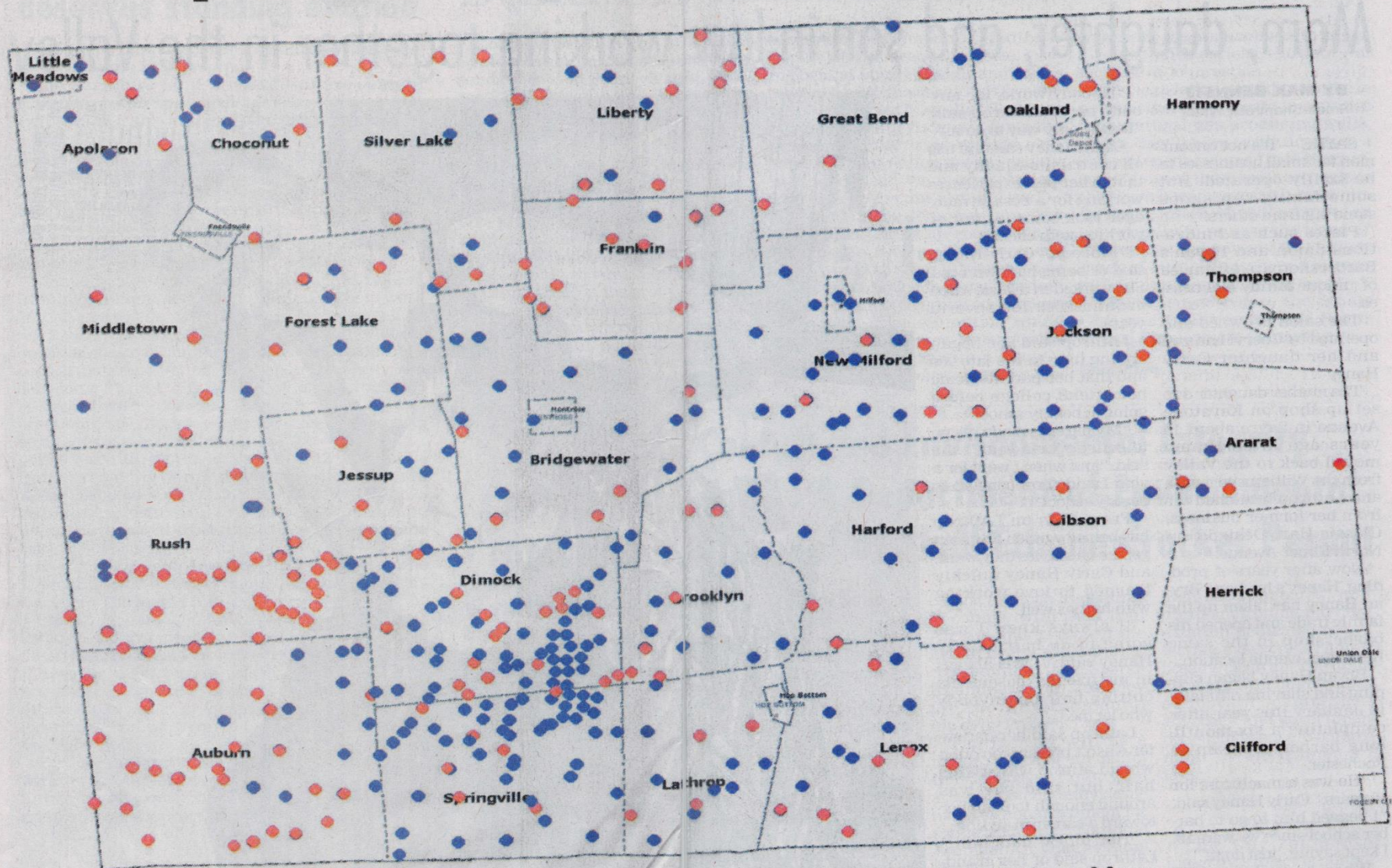


# Generally Speaking, after 3/18/2009

- **Gathering** line is located between the wellhead and compressor station. (DEP)
- **Transmission** line is from compressor to compressor, FERC regulated. (District)
- **Distribution** lines are providing gas to the end user from a compressor/meter station. (District)



# Well pad locations in Susquehanna Co.



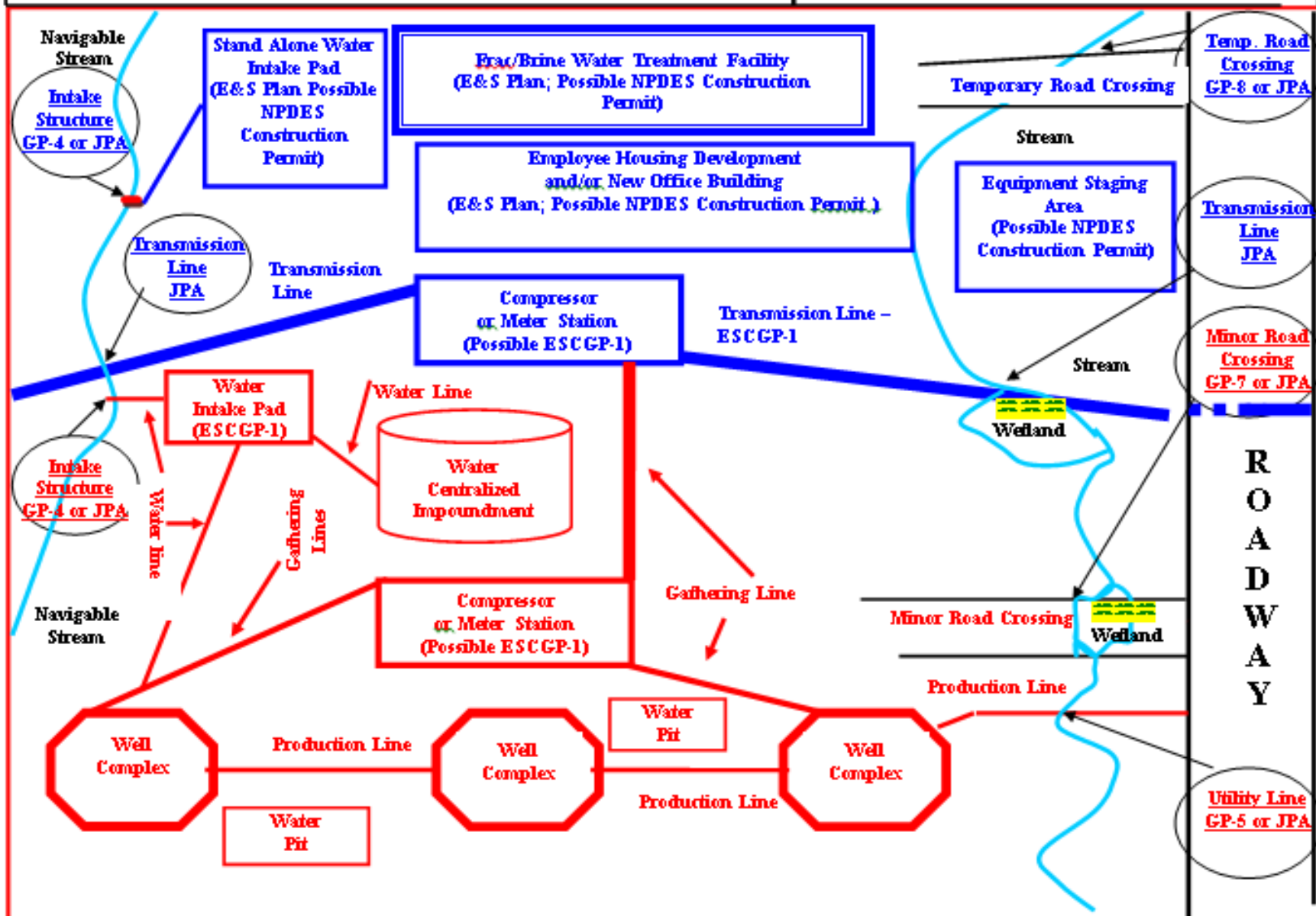
SUSQUEHANNA COUNTY - Well Pad Location Map

MAP KEY: ● Permitted Well Pads  
● Pads With Wells Started

1986 Total Permitted Wells | 1213 Total Wells Started

Map Courtesy of [www.MarcellusGas.Org](http://www.MarcellusGas.Org)  
Based on DEP/PUC Information Aug 1st, 2015  
Copyright © 2015 - MarcellusGas.Org

**RED** – Regional Oil/Gas Office Responsibility  
(102/105 Review, Inspection, Complaint Handling)



# Initial request from consultant

- Land currently in ag use
- Land with ag restrictions
- Land with specialty crops
- Land with grazing allotments
- Conservation Resource Protection Lands
- Soils highly susceptible to compaction
- Soils with severe erosion potential
- Soils with poor re-vegetation potential
- Prime farmland soils
- Noxious weeds or the potential for establishment of noxious weeds
- Recommended seed mixes for restoration
- Any restrictions or easements relevant to contractor yards during const.

# Permitting Process

- Pre-Application meeting
- Consultant submits ESCGP-2 application to District. Fee based on disturbed acres.
- Consultant submits Chapter 105 permit application to DEP and ACOE
- District reviews original submission for completeness (15 days)
- District reviews plan for technical content (43 days)
- Consultant responds to comments, resubmits to district (10 days)
- If not correct at this point goes to elevated review



# Permitting Process

- District acknowledges issuance of permit
- DEP and ACOE will issue their appropriate permits
- Pre-construction meeting held
- District conducts field inspections until site achieves permanent stabilization

# Anticipated Permits / Approvals

Permits, Licenses, Approvals, and Certificates Required for Construction, Operation, and Maintenance of the Constitution Pipeline Project	
Federal	
Permit/Approval	Administering Agency
Certificate of Public Convenience and Necessity	Federal Energy Regulatory Commission
PASPGP-4 CWA Section 404 Individual or Nationwide Permits (NY & Buffalo)	Army Corps of Engineers Baltimore District
	Army Corps of Engineers New York District
	Army Corps of Engineers Buffalo District
Consultation	USFWS Pennsylvania Field Office
	USFWS New York Field Office
Surface Water Withdrawal / Consumptive Use Permits	Susquehanna River Basin Commission
Pennsylvania State	
Permit/Approval	Administering Agency
CWA 401 Water Quality Certification	PADEP Northeast Regional Office Bureau of Watershed Management
Chapter 105 Water Obstruction and Encroachment Permits	
CWA Section 402 NPDES – Hydrostatic Test Water Discharge General Permit (PAG 10) or Individual Permit	PADEP Northeast Regional Office Bureau of Water Quality Protection
CWA Section 402 NPDES Chapter 102 Erosion and Sediment Control General Permit (ESCGP-1) for Construction Activities	PADEP Bureau of Watershed Management and Bureau of Oil and Gas Management
Submerged Land License Agreement	PADEP Bureau of Waterways Engineering
Highway Occupancy Permit	PennDOT
Clearance (Rare Species)	PA DCNR
Clearance (Rare Species)	PA Fish and Boat Commission
Clearance (Rare Species)	PA Game Commission
Blasting Permit	PA Fish and Boat Commission
Clearance (Cultural Resources)	PA Historic Museum Commission
Pennsylvania Local and County	
Permit/Approval	Administering Agency
Erosion & Sedimentation Control Plan Review	Susquehanna County Conservation Districts



CONSTITUTION PIPELINE

# Constitution Pipeline Project Introductory Meeting

Pennsylvania Department of Environmental Protection

United States Army Corps of Engineers

United States Fish and Wildlife Service

Susquehanna County Soil Conservation District

May 10, 2012

Constitution Pipeline Company, LLC

---









09/10/2014 12:12





09/10/2014 12:21





11/24/2014 14:38





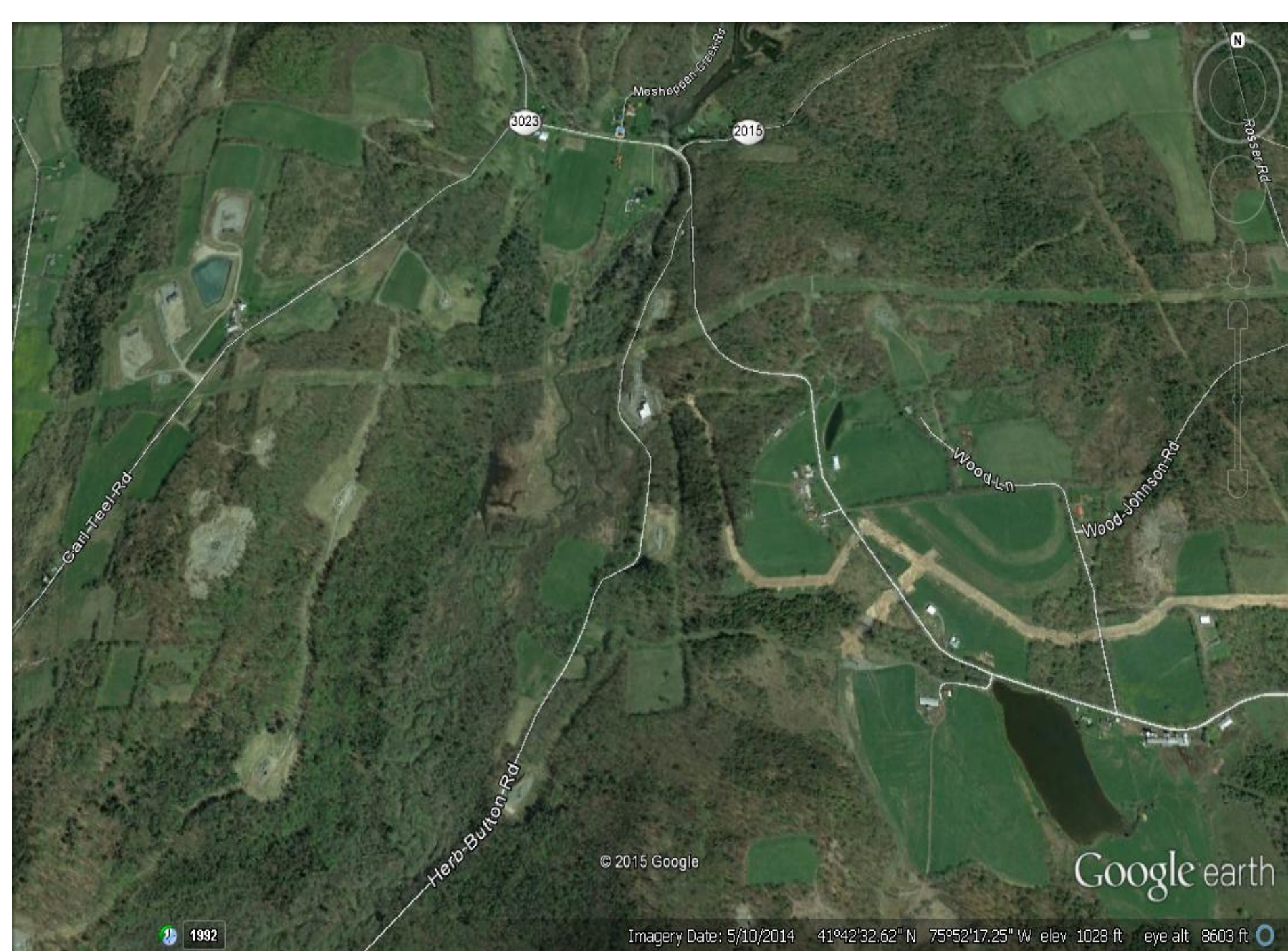
10/03/2014 10:03





06/01/2015 14:21





© 2015 Google

Google earth

1992

Imagery Date: 5/10/2014 41°42'32.62" N 75°52'17.25" W elev 1028 ft eye alt 8603 ft

# Landowner Liaison

- Working to mediate restoration of ag BMP's such as sub-surface tile, diversion terraces, field accesses.
- Restoration of cropland. Lack of topsoil big concern. Compaction of topsoil.
- Permanent stabilization of steep slopes
- Restoration of fencing, construction during pasture season



In closing, one of the topics I was asked to cover for today's presentation was *how districts might serve in an educational capacity to the community on environmental issues*. I would like to think that's exactly what happened here today.

## Susquehanna County Conservation District

- > Home
- Calendar
- What's New
- Projects
- About Us
- Directors
- Staff
- FAQ's
- Programs
- Links
- Permit Applications
- Education
- Grants
- Directions
- Environment
- Winners
- Friends of Environment

[Tree Tubes](#)

[2015 Fish Sale](#)

[Carp Grass Permit](#)

[2015 Minutes](#)



The Susquehanna County Conservation District provides information and technical assistance to assist people and communities in the wise use of their natural resources.

Through partnerships among non-profit groups and public agencies, the district promotes a cooperative approach to natural resource issues.

Among the district's programs are Environmental Education, Erosion and Sedimentation Pollution Control & Waterway and Wetland Protection, Dirt and Gravel Roads Pollution Prevention, Nutrient Management, Chesapeake Bay Program, Watershed Association formation, and Agricultural Land Preservation.

The district is guided at the local level by a Board of Directors and at the state level by the State Conservation Commission. The Susquehanna Conservation District is a member of the Pennsylvania Association of Conservation Districts, a nonprofit organization that supports, enhances, and promotes Pennsylvania's conservation Districts and their programs.

88 Chenango St., Montrose, PA 18801  
(570) 278-4600 ext. 3050  
FAX (570) 278-2497  
Hours: Monday-Friday 8:00AM - 4:30PM  
email: [soll@suscondistrict.org](mailto:soll@suscondistrict.org)